

2021 – 2022

LabDiet®

COMPLETE PRODUCT SUMMARY



COMPLETE PRODUCT SUMMARY

RODENT FORMULAS

	Laboratory Rodent Diet	Certified Rodent Diet	Formulab Diet	Laboratory Autoclavable Rodent Diet	Rat Diet	Autoclavable Rodent Breeder Diet	Mouse Diet	Mouse Diet 9F	Autoclavable Mouse Breeder	PicoLab® Rodent Diet 20	PicoLab® Mouse Diet 20
PRODUCT CODE NUMBER	5001	5002	5008	5010	5012	5013	5015	5020	5021	5053	5058
NUTRIENTS											
Protein, min %	23.0	20.0	23.0	23.0	22.0	20.0	17.0	20.0	20.0	20.0	20.0
Crude fat, min %	4.5	4.5	6.5	4.5	4.0	5.0	11.0	9.0	9.0	4.5	9.0
Crude fiber, max %	6.0	5.5	4.0	6.0	5.0	6.0	3.0	3.0	5.0	6.0	4.0
CERTIFIED IRRADIATED PICOLAB⁰¹		●								● 5K75	
IRRADIATED PICOVAC⁰²	5L0D	☺	☺				☺ 5LJ5 ☺ 5LPI			☺ 5061	☺ 5062
AUTOCLAVABLE MICRO-PACK³		■		▲		▲			▲		
MACRO-PACK⁴		■ 5LV4		■ 5LIL					■ 5LIM	■ 5LU7	■ 5LU9
APPROPRIATE FOR:											
Rats	■	■	■	■	■	■				■	
Mice	■	■	■	■		■	■	■	■	■	■
Hamsters	■	■	■	■		■				■	
PRODUCT FORM⁵											
Round Pellet: 1/2" round x 3/4" long 5/8" diameter x 1.0" long											
Oval Pellet: 3/8" x 5/8" x 1"	■	■	■	■	■	■	■	■	■	■	■
Cylinder Pellet: 3/8" diameter x 3/4" length											
Extruded Particle										■ 5R53	■ 5R58
Meal	■	■	s/o	s/o	■	s/o	s/o	s/o	s/o	s/o	s/o

Also available: Purified Reward Tablets

LEGEND

¹ PicoLab® = packaged in a 25 lb heat sealed, CapSack Valéron® bag

² PicoVac® = packaged in a 30 lb box - 6 x 5 lb vacuum sealed bags

³ Micro-Pack = 16 to 30 gram packs

⁴ Macro-Pack = 30 to 150 gram packs

⁵ s/o = special order

For more information on any diets, please call our toll-free customer assistance number 1-800-227-8941.

RODENT FORMULAS

	LabDiet® JL Mouse Breeder/ Auto	LabDiet® JL Rat & Mouse/ Auto 6F	LabDiet® JL Rat & Mouse/ Auto 4F	Certified PicoLab® Rodent 20	Pico-Vac® Rodent Soft Mix	Verified Casein Diet 10 IF ⁶	LabDiet® JL Rat & Mouse/ Irr 6F	LabDiet® JL Rat & Mouse/Irr 4F	Prolab® RMH 1800	PicoLab® High Energy Mouse Diet
PRODUCT CODE NUMBER	5K20	5K52 5K67	5K54	5K75	5K92	5K96	5LG4	<i>5LG6</i>	5LL2	5LJ5
NUTRIENTS										
Protein, min %	17.0	18.0	18.0	20.0	20.0	19.0	18.0	18.0	18.0	17.0
Crude fat, min %	10.0	6.0	4.0	4.5	9.0	4.0	6.0	4.0	5.0	11.0
Crude fiber, max %	2.5	5.0	5.0	6.0	4.0	5.0	5.0	5.0	5.0	3.0
CERTIFIED				●						
IRRADIATED PICOLAB¹		⊙ 5LG4	⊙ 5LG6	⊙		⊙ BOX	⊙	⊙		⊙
IRRADIATED PICOVAC²		⊙ 5LL4			⊙		⊙ 5LL4			⊙ 5LPI
AUTOCLAVABLE	▲	▲	▲				▲ 5K52/5K67	▲ 5K54		
MICRO-PACK³										
MACRO-PACK⁴										
APPROPRIATE FOR:										
Rats		■	■	■	■	■	■	■	■	
Mice	■	■	■	■	■	■	■	■	■	■
Hamsters			■	■	■	■	■	■	■	
PRODUCT FORM⁵										
Round Pellet: <i>1/2" round x 3/4" long</i> <i>3/8" diameter x 1.0" long</i>						■				
Oval Pellet: <i>3/8" x 5/8" x 1"</i>		■ 5K67		■			■		■	■
Cylinder Pellet: <i>3/8" diameter x 3/4" length</i>	■	■ 5K52	■				■ 5LIT	■		
Extruded Particle										
Meal		<i>s/o</i>	<i>s/o</i>	<i>s/o</i>	■	■			<i>s/o</i>	<i>s/o</i>

LEGEND

¹ PicoLab® = packaged in a 25 lb heat sealed, CapSack Valéron® bag

² PicoVac® = packaged in a 30 lb box - 6 x 5 lb vacuum sealed bags

³ Micro-Pack = 16 to 30 gram packs

⁴ Macro-Pack = 30 to 150 gram packs

⁵ s/o = special order

⁶ See verified sell sheet for more detail.

Product numbers in gray italics require a minimum order.

For more information on any diets, please call our toll-free customer assistance number 1-800-227-8941.

RODENT FORMULAS

	Prolab® RMH 3000	Prolab® RMH 3500, Autoclavable	Prolab® RMH 2000	Prolab® RMH 1000	Prolab® RMH 2500	Prolab® Isopro® RMH 3000	PicoLab® Verified 75 IF ⁶	PicoLab® Select Rodent 50 IF/6F ⁶	PicoLab® Select Mouse 50 IF/9F ⁶	Modified Mouse w/30% Milk Product/ 48% kcal fat
PRODUCT CODE NUMBER	5P00	5P04	5P06	5P07	5P14	5P75 5P76	5V75 Series	5V5R Series	5V5M Series	58NX
NUTRIENTS										
Protein, min %	22.0	22.0	18.0	14.0	23.0	22.0	20.0	18.0	18.0	14.4
Crude fat, min %	5.0	5.0	9.0	6.0	4.5	5.0	4.5	5.0	8.0	24.4
Crude fiber, max %	5.0	5.0	4.0	4.5	6.0	5.0	4.0	5.0	5.0	1.6
CERTIFIED										
IRRADIATED PICOLAB⁰¹	🌀 5P76				🌀 5LN6	🌀	🌀	🌀	🌀	🌀 BOX
IRRADIATED PICOVAC⁰²	🌀 5P75					🌀				
AUTOCLAVABLE		▲			▲ 5R24		▲ 5V0T	▲ 5V0F	▲ 5V0G	
MICRO-PACK³										
MACRO-PACK⁴										
APPROPRIATE FOR:										
Rats	■	■	■	■	■	■	■	■		■ ZDF
Mice	■	■	■	■	■	■	■	■	■	■
Hamsters	■	■	■	■	■	■	■	■		
PRODUCT FORM⁵										
Round Pellet: <i>1/2" round x 3/4" long</i> <i>5/8" diameter x 1.0" long</i>										■
Oval Pellet: <i>3/8" x 5/8" x 1"</i>	■	■	■	■	■	■	■ 25 lb Irradiated ■ 15 kg Standard	■ 25 lb Irradiated	■ 25 lb Irradiated	
Cylinder Pellet: <i>3/8" diameter x 3/4" length</i>										
Extruded Particle							■ 20 lb Irradiated 5V12 ■ 10 kg Standard	■ 25 lb Irradiated ■ 15 kg Standard ■ 25 lb Autoclavable 5V0F	■ 25 lb Irradiated ■ 25 lb Autoclavable 5V0G	
Meal	s/o		s/o	s/o	s/o					

LEGEND

¹ PicoLab® = packaged in a 25 lb heat sealed, CapSack Valéron® bag

² PicoVac® = packaged in a 30 lb box - 6 x 5 lb vacuum sealed bags

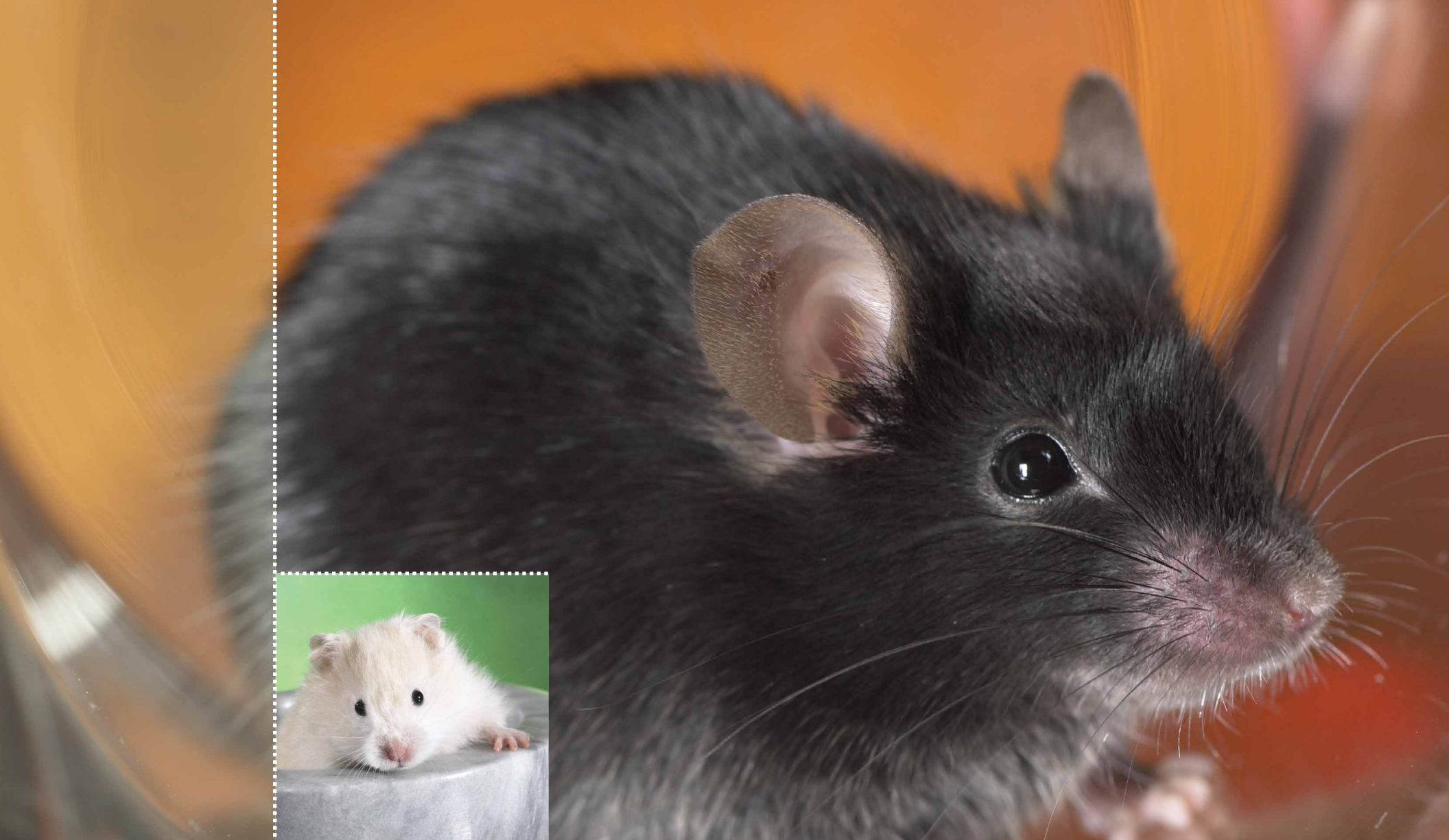
³ Micro-Pack = 16 to 30 gram packs

⁴ Macro-Pack = 30 to 150 gram packs

⁵ s/o = special order

⁶ See verified sell sheet for more detail.

For more information on any diets, please call our toll-free customer assistance number 1-800-227-8941.



LABDIET® RODENT PRODUCT SUMMARY

Additional information available at www.labdiet.com

Custom and purified diets are also available at www.testdiet.com

R A B B I T F O R M U L A S

	Laboratory Rabbit Diet	Certified Rabbit Diet	Certified High Fiber Rabbit Diet	Laboratory Rabbit Diet HF
PRODUCT CODE NUMBER	5321	5322	5325	5326
NUTRIENTS				
Protein, min %	16.0	16.0	14.0	14.0
Crude fat, min %	2.5	2.5	1.5	1.5
Crude fiber, max %	18.0	18.0	25.0	25.0
CERTIFIED IRRADIATED		●	●	⚙️ <i>5L25 s/o</i>
PRODUCT FORM¹				
Pellet: <i>1/6" x 3/8"</i>	■	■	■	■
Meal	s/o	s/o		s/o






LEGEND

¹ s/o = special order

Product numbers in gray italics require a minimum order.

For more information on any diets, please call our toll-free customer assistance number 1-800-227-8941.

GUINEA PIG FORMULAS

	Guinea Pig Diet	Certified Guinea Pig Diet	Prolab® Guinea Pig
PRODUCT CODE NUMBER	5025	5026	<i>5P18</i>
NUTRIENTS			
Protein, min %	18.0	18.0	18.0
Crude fat, min %	4.0	4.0	4.0
Crude fiber, max %	16.0	16.0	15.0
CERTIFIED IRRADIATED	 5L26 s/o	  50E6 s/o	
PRODUCT FORM¹			
Pellet: ¹ / ₆ " x ³ / ₈ "			s/o
Meal	s/o		

For more information on any diets, please call our toll-free customer assistance number 1-800-227-8941.

LEGEND
¹ s/o = special order
 Product numbers in gray italics require a minimum order.

PRIMATE FORMULAS

	Fiber-Balanced Monkey Diet	Monkey Diet Jumbo Monkey Diet	New World Primate Diet	High Protein Monkey Diet & Jumbo	Certified Primate Diet	Laboratory Fiber-Plus® Monkey Diet & Jumbo	Certified Hi-Fiber Primate	Old World Primate w/ DentaGuard	Callitrichid Diet ²	Callitrichid High Fiber Diet ²
PRODUCT CODE NUMBER	5000	5037 5038	5040	5045 5047	5048	5049 5050	5K91	<i>5LGI</i>	5LK6	5LK7
NUTRIENTS										
Protein, min %	20.0	15.0	20.0	25.0	25.0	20.0	20.0	20.0	8.0	8.0
Crude fat, min %	5.0	5.0	9.0	5.0	5.0	5.0	5.0	5.0	2.8	1.8
Crude fiber, max %	14.0	6.0	5.5	6.5	6.5	10.0	10.0	10.0	1.0	2.0
CERTIFIED					●		●			
PRODUCT FORM¹										
Biscuit										
Standard Biscuit		■ 5038		■ 5045	■	■ 5049				
Peanut Biscuit						■ 5LIU	■	■		
Jumbo Biscuit	■	■ 5037		■ 5047		■ 5050				
Short Biscuit										
Mini Biscuit			■		s/o					
Meal/Powder				s/o	s/o	■ 5049			■	■

LEGEND

¹ s/o = special order

² Values on a reconstituted basis

Biscuit sizes:

Biscuit:	19 x 25 x 45 mm	(³ / ₄ " x 1" x 1- ⁷ / ₈ ")
Standard Biscuit:	16 x 22 x 45 mm	(⁵ / ₈ " x ⁷ / ₈ " x 1- ³ / ₄ ")
Peanut Biscuit:	50 x 25 x 31 mm	(2" x 1" x 1- ¹ / ₄ ")
Jumbo Biscuit:	45 x 25 x 25 mm	(1- ³ / ₄ " x 1" x 1")
Short Biscuit:	16 x 22 x 19 mm	(⁵ / ₈ " x ⁷ / ₈ " x ³ / ₄ ")
Mini Biscuit:	6 x 6 x 25 mm	(¹ / ₄ " x ¹ / ₄ " x 1")

Product numbers in gray italics require a minimum order.

For more information on any diets, please call our toll-free customer assistance number 1-800-227-8941.

SWINE FORMULAS

	Laboratory Mini-Pig Starter Diet	Laboratory Mini-Pig Grower Diet	Laboratory Mini-Pig Breeder Diet	Laboratory Porcine Grower Diet	Low Residue Porcine Surgery Mix	Certified Mini-Pig Grower/Maintenance Diet	Laboratory Mini-Pig HF Grower Diet
PRODUCT CODE NUMBER	5080	5081	5082	5084	594K	5K99	5L80
NUTRIENTS							
Protein, min %	20.0	14.0	16.0	16.0	15.0	16.0	15.0
Crude fat, min %	4.0	2.5	2.5	2.5	7.5	3.0	3.0
Crude fiber, max %	6.5	18.0	14.0	5.0	1.0	9.0	8.0
CERTIFIED¹ IRRADIATED		● 5KIG s/o		● 5LNO		●	
LIFE STAGE:							
Starter	■						
Grower		■	■	■		■	■
Breeder			■	■		■	
Maintenance		■	■	■	■	■	
PRODUCT FORM							
Pellet:							
1/6" x 1/4"	■	■	■	■		■	■
3/8" x 3/4"		■ 5L0U					
Meal					■		

For more information on any diets, please call our toll-free customer assistance number 1-800-227-8941.


LEGEND
¹ s/o = special order
 Product numbers in gray italics require a minimum order.

CANINE / FELINE FORMULAS

	Laboratory Canine Diet	Certified Laboratory Canine Diet	Low Residue Canine Surgery Mix	High Density Canine Diet	Certified High Density Canine Diet	Laboratory Feline Diet
PRODUCT CODE NUMBER	5006	5007	5K94	5L18	5L66	5003
NUTRIENTS						
Protein, min %	25.0	25.0	16.0	27.0	27.0	30.0
Crude fat, min %	9.0	9.0	8.0	16.0	16.0	10.0
Crude fiber, max %	4.0	4.0	1.0	4.0	4.0	4.5
CERTIFIED IRRADIATED	● 5007	●		● 5L66	●	
PRODUCT FORM						
Chunk:						
$\frac{5}{8}'' \times \frac{1}{4}''$						
$\frac{5}{8}'' \times \frac{5}{16}''$	■	■				
$\frac{3}{8}'' \times \frac{5}{16}''$				■	■	
Meal/Powder	■	■	■			
Pellet:						
$\frac{3}{16}'' \times \frac{3}{8}''$						■

For more information on any diets, please call our toll-free customer assistance number 1-800-227-8941.

OTHER FORMULAS

	Laboratory Chick Diet S-G	Laboratory Cage Layer Diet	Rumilab® Diet	Rumilab® Maintenance Diet	Aquatic Mix Diet	Xenopus Diet	High Density Ferret Diet	PicoLab® Natural Sunflower	Fly Larvae Media
PRODUCT CODE NUMBER	5065	5070	5508	5510	5K93	5LF9	5L14	5LP8	5S6Z
NUTRIENTS									
Protein, min %	21.0	17.5	13.5	13.5	50.0	55.0	38.0	16.0	9.0
Crude fat, min %	3.0	3.0	1.5	1.5	14.0	15.0	20.5	23.0	1.5
Crude fiber, max %	4.0	5.0	25.0	25.0	1.5	1.0	4.0	35.0	30.0
IRRADIATED									
APPROPRIATE FOR:									
Poultry	■	■							
Ferrets							■		
Ruminants			■	■					
Other					■	■		■	■
PRODUCT FORM¹									
Pellet:									
¹ / ₄ " x ¹ / ₂ "			■	■					
Short Cut, ¹ / ₈ "		■							
Meal/Powder					■	■			
Extruded Particle	■						■		25 lb Box

For more information on any diets, please call our toll-free customer assistance number 1-800-227-8941.

LEGEND
¹ s/o = special order

INDEX BY PRODUCT CODE

Product Code Number

5000	Fiber-Balanced Monkey Diet
5001	Laboratory Rodent Diet
5002	Certified Rodent Diet
5003	Laboratory Feline Diet
5006	Laboratory Canine Diet
5007	Certified Canine Diet
5008	Formulab Diet
5010	Laboratory Autoclavable Rodent Diet
5012	Rat Diet
5013	Autoclavable Rodent Breeder Diet
5015	Mouse Diet
5020	Mouse Diet 9F
5021	Autoclavable Mouse Diet
5025	Guinea Pig Diet
5026	Certified Guinea Pig Diet
5037	Monkey Diet Jumbo
5038	Monkey Diet
5040	New World Primate Diet
5045	High Protein Monkey Diet
5047	High Protein Monkey Diet Jumbo
5048	Certified Primate Diet
5049	Laboratory Fiber-Plus® Monkey Diet
5050	Laboratory Fiber-Plus® Monkey Diet Jumbo
5053	PicoLab® Rodent Diet 20
5058	PicoLab® Mouse Diet 20
5061	PicoLab® Lab Rodent Diet
5062	Pico-Vac® Mouse Diet 20
5065	Laboratory Chick Diet S-G
5070	Laboratory Cage Layer Diet
5080	Laboratory Mini-Pig Starter Diet
5081	Laboratory Mini-Pig Grower Diet
5082	Laboratory Mini-Pig Breeder Diet
5084	Laboratory Porcine Grower Diet
5321	Laboratory Rabbit Diet
5322	Certified Rabbit Diet
5325	Certified High Fiber Rabbit Diet
5326	Laboratory Rabbit Diet HF
5508	Rumilab® Diet
5510	Rumilab® Maintenance Diet

Product Code Number

594K	Low Residue Porcine Surgery Mix
58NX	Modified Mouse w/30% Milk Product/48% kcal fat
5K20	LabDiet® JL Mouse Breeder/Auto
5K52	LabDiet® JL Rat & Mouse/Auto 6F
5K67	LabDiet® JL Rat & Mouse/Auto 6F
5K54	LabDiet® JL Rat & Mouse/Auto 4F
5K75	Certified PicoLab® Rodent 20
5K91	Certified Hi-Fiber Primate Diet
5K92	Pico-Vac® Rodent Soft Mix
5K93	Aquatic Mix Diet
5K94	Low Residue Canine Surgery Mix
5K96	Verified Casein Diet 10 IF
5K99	Certified Mini-Pig Grower/Maintenance Diet
5L14	High Density Ferret Diet
5L18	High Density Canine Diet
5L66	Certified High Density Canine Diet
5L80	LabDiet® Mini-Pig HF Grower
5LF9	Xenopus Diet
5LG1	Old World Primate w/DentaGuard
5LG4	LabDiet® JL Rat & Mouse Irr 6F
5LG6	LabDiet® JL Rat & Mouse Irr 4F
5LJ5	PicoLab® High Energy Mouse Diet
5LK6	Callitrichid Diet
5LK7	Callitrichid High Fiber Diet
5LP1	Pico-Vac® High Energy Mouse Diet
5LP8	PicoLab® Natural Sunflower
5P00	Prolab® RMH 3000
5P04	Prolab® RMH 3500, Autoclavable
5P06	Prolab® RMH 2000
5P07	Prolab® RMH 1000
5P14	Prolab® RMH 2500
5P18	Prolab® Guinea Pig
5P75	Prolab® Isopro® RMH 3000
5P76	Prolab® Isopro® RMH 3000
5S6Z	Fly Larvae Media
5V12	PicoLab® Verified 75 IF EXT
5V5M	PicoLab® Select Mouse 50 IF/9F
5V5R	PicoLab® Select Rodent 50 IF/6F
5V75	PicoLab® Verified 75 IF

For more information on any diets, please call our toll-free customer assistance number 1-800-227-8941.

INDEX BY PRODUCT NAME

LabDiet® Formulas

Aquatic Mix Diet.....	5K93
Callitrichid Diet.....	5LK6
Callitrichid High Fiber Diet.....	5LK7
High Density Canine Diet.....	5L18
Low Residue Canine Surgery Mix.....	5K94
Low Residue Porcine Surgery Mix.....	594K
Old World Primate w/DentaGuard.....	5LG1
Verified Casein Diet 10 IF.....	5K96
Fiber-Balanced Monkey Diet.....	5000
Fly Larvae Media.....	5S6Z
Formulab Diet.....	5008
Guinea Pig Diet.....	5025
High Density Ferret Diet.....	5L14
High Protein Monkey Diet.....	5045
High Protein Monkey Diet Jumbo.....	5047
LabDiet® JL Mouse Breeder/Auto.....	5K20
LabDiet® JL Rat & Mouse/Auto 6F.....	5K52
LabDiet® JL Rat & Mouse/Auto 6F.....	5K67
LabDiet® JL Rat & Mouse/Auto 4F.....	5K54
LabDiet® JL Rat & Mouse/Irr 6F.....	5LG4
LabDiet® JL Rat & Mouse/Irr 4F.....	5LG6
LabDiet® Mini-Pig HF Grower.....	5L80
LabDiet® Xenopus Diet.....	5LF9
Laboratory Cage Layer Diet.....	5070
Laboratory Canine Diet.....	5006
Laboratory Chick Diet S-G.....	5065
Laboratory Feline Diet.....	5003
Laboratory Fiber-Plus® Monkey Diet.....	5049
Laboratory Fiber-Plus® Monkey Diet Jumbo.....	5050
Laboratory Mini-Pig Breeder Diet.....	5082
Laboratory Mini-Pig Grower Diet.....	5081
Laboratory Mini-Pig Starter Diet.....	5080
Laboratory Porcine Breeder/Lactation Diet.....	5085
Laboratory Porcine Grower Diet.....	5084
Laboratory Rabbit Diet.....	5321
Laboratory Rabbit Diet HF.....	5326
Laboratory Rodent Diet.....	5001
Modified Mouse w/30% Milk Product/ 48% kcal fat.....	58NX
Monkey Diet.....	5038

Monkey Diet Jumbo.....	5037
Mouse Diet.....	5015
Mouse Diet 9F.....	5020
New World Primate Diet.....	5040
Prolab® Guinea Pig.....	5P18
Prolab® RMH 1000.....	5P07
Prolab® RMH 2000.....	5P06
Prolab® RMH 2500.....	5P14
Prolab® RMH 3000.....	5P00
Rat Diet.....	5012
Rumilab® Diet.....	5508
Rumilab® Maintenance Diet.....	5510

Certified LabDiet® Formulas ●

Certified High Density Canine Diet.....	5L66
Certified PicoLab® Rodent 20.....	5K75
Certified Canine Diet.....	5007
Certified Guinea Pig Diet.....	5026
Certified Hi-Fiber Primate Diet.....	5K91
Certified High Fiber Rabbit Diet.....	5325
Certified Mini-Pig Grower/Maintenance Diet.....	5K99
Certified Primate Diet.....	5048
Certified Rabbit Diet.....	5322
Certified Rodent Diet.....	5002

Autoclavable LabDiet® Formulas ▲

Autoclavable Mouse Diet.....	5021
Autoclavable Rodent Breeder Diet.....	5013
Certified Autoclavable Rodent Diet.....	5014
Laboratory Autoclavable Rodent Diet.....	5010
Prolab® RMH 3500, Autoclavable.....	5P04

Irradiated LabDiet® Formulas ☼

PicoLab® High Energy Mouse Diet.....	5LJ5
PicoLab® Natural Sunflower.....	5LP8
PicoLab® Select Mouse 50 IF/9F.....	5V5M
PicoLab® Select Rodent 50 IF/6F.....	5V5R
PicoLab® Verified 75 IF EXT.....	5V12
PicoLab® Verified 75 IF.....	5V75
Pico-Vac® High Energy Mouse Diet.....	5LP1
Pico-Vac® Rodent Soft Mix.....	5K92
PicoLab® Mouse Diet 20.....	5058
PicoLab® Rodent Diet 20.....	5053
Pico-Vac® Lab Rodent Diet.....	5061
Pico-Vac® Mouse Diet 20.....	5062
Prolab® Isopro® RMH 3000.....	5P75
Prolab® Isopro® RMH 3000.....	5P76

For complete nutrient composition, ingredients and feeding directions, please refer to www.labdiet.com. For more information on any diets, please call our toll-free customer assistance number 1-800-227-8941.



LabDiet
PRODUCT SUMMARY